

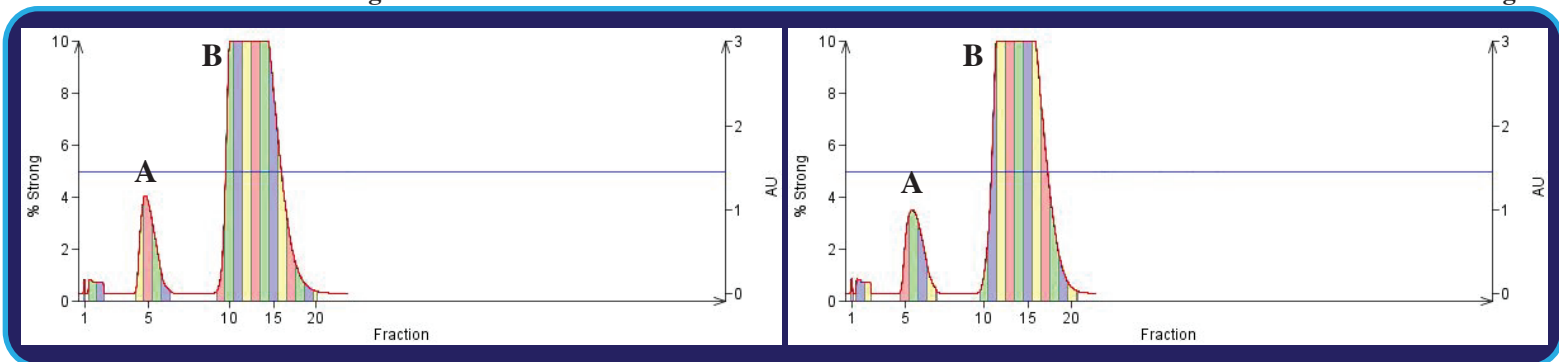


SINGLE STEP

U.S. Patent# 7, 138, 061

Thomson SINGLE StEP™ 40g

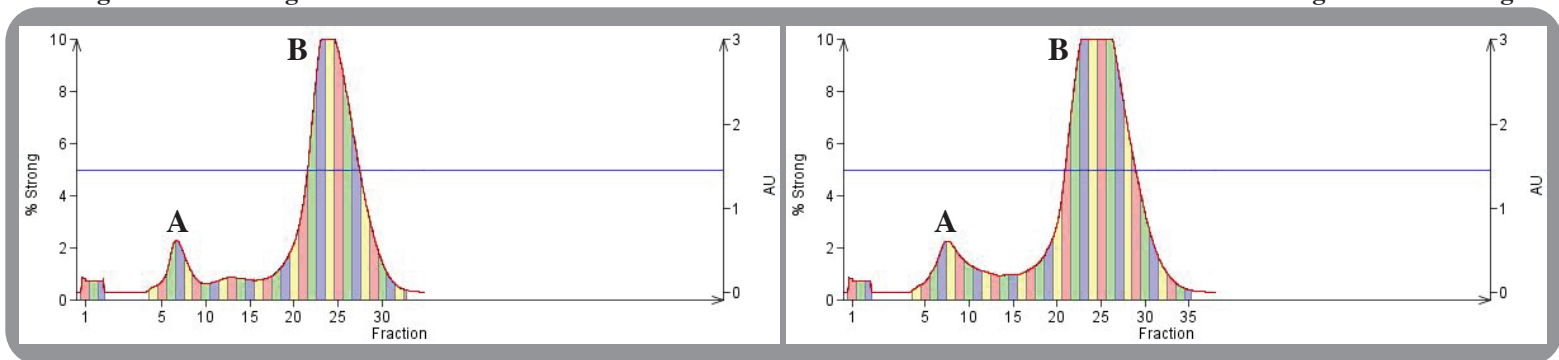
Thomson SINGLE StEP™ 40g



COMPARE THE DIFFERENCE*

Biotage® SNAP™ 50g

Biotage® SNAP™ 50g



Peak A = Acetophenone (1g) Peak B = 4-Methoxyacetophenone(1g)

Thomson SINGLE StEP Columns showed a good separation with 2 Grams of compound consisting of Acetophenone (1g) and 4-Methoxyacetophenone(1g) in 5% EtOAc-Hexane. The clean separation had a Delta-Rf = 0.09. We were able to easily dry load this on to the column with 2 grams of compound absorbed on 8 grams of silica and a head space frit placed on top. No extra loading column was required. It took under 8 fractions to purify 1 gram of 4-Methoxyacetophenone. The total run time was between 18-20 fractions. This took less than 1 liter to dry down.

SINGLE STEP Columns have a recommended loading capacity of 1gram of compound for every 20grams of silica with a Delta-Rf of greater than 0.20. Separations that have a Delta-Rf of less than 0.10 have a recommended loading capacity of 1gram of compound for every 40grams of silica. Please use this as a guide even though we can do better in some cases.

When using the Biotage® Snap™ 50g we were unable to separate fully the 2 grams of compound consisting of Acetophenone (1g) and 4-Methoxyacetophenone (1g) in 5% EtOAc-Hexane with a Delta-Rf = 0.09. It took approximately 16 fractions to purify the 4-Methoxyacetophenone. This took us 2 Liters of solvent to dry down. The total run was 30+ fractions to finish the purification.

When you use your SINGLE StEP Columns (patented) be confident that you can load more and get a clean separation. SINGLE STEP Columns allow for the ability to use smaller columns for larger separations.

SINGLE StEP Columns with E.Merck Silica

Column — Merck Silica	Qty.	Compound Loading
4913102 SINGLE StEP 4g	20/case	50mg-200mg
4913109 SINGLE StEP 12g	20/case	300mg-600mg
4913114 SINGLE StEP 25g	20/case	700mg-1.4g
4913119 SINGLE StEP 40g	20/case	1.5g-2.5g
4913122 SINGLE StEP 80g	20/case	2.6g-4.1g
4913124 SINGLE StEP 90g	20/case	4.2g-5.6g
4913126 SINGLE StEP 110g	16/case	5.8g-6.5g
4913128 SINGLE StEP 160g	12/case	7.2g-8.4g
4913130 SINGLE StEP 240g	10/case	11.5g-13.8g
4913134 SINGLE StEP 300g	8/case	14.4g-17.0g

Head Space Frits for SINGLE StEP Columns

Sizes for each column	Qty.
491250 Head Space Frits for 4g	100/case
491252 Head Space Frits for 12g	100/case
491253 Head Space Frits for 25g	100/case
491254 Head Space Frits for 40g	100/case
491256 Head Space Frits for 80or 90g	100/case
491258 Head Space Frits: 110or 160g	100/case
491260 Head Space Frits: 240or 300g	100/case

Ordering Information:

Thomson Instrument Company

Phone: 800.541.4792 or 760.757.8080 Fax: 760.757.9367 e-mail: folks@htslabs.com www.htslabs.com

1121 South Cleveland Street, Oceanside, CA 92054

Thomson Instrument Company is not affiliated with Biotage A.B.® or with the Snap™, and also EMD Chemicals or E.Merck .

*The test results may vary with the sample compound analyzed.