

series	cap color	membrane	pore size	part #
eXtreme FV®	●	NYLON	0.2µm	85538

Quick Fermentation Sample prep with the eXtreme Filter vial VS syringe filters: wasted time and sample loss

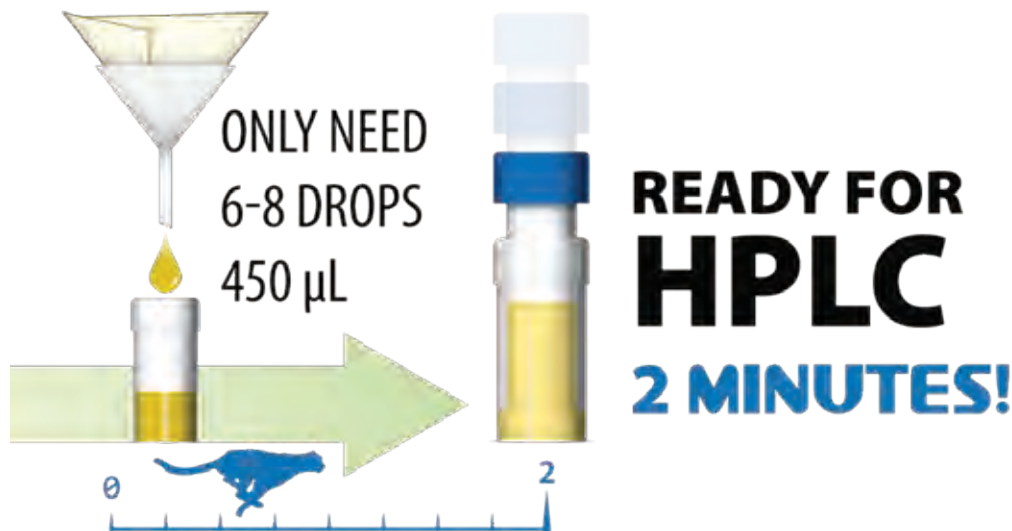
“For my plant, the vials are everything that I am looking for as a lab manager: consistent, accurate, easy to use, simplify prep time, lessen inventory, and are cost effective!”

-Cole Carbon Green Bioenergy

Key Features

- 2 minutes from collection to HPLC
- Less Time Filtering = Less Evaporation
- Reduce enzyme use because of more accurate readings
- Eliminate multiple syringe filters, syringe, HPLC cap & vial

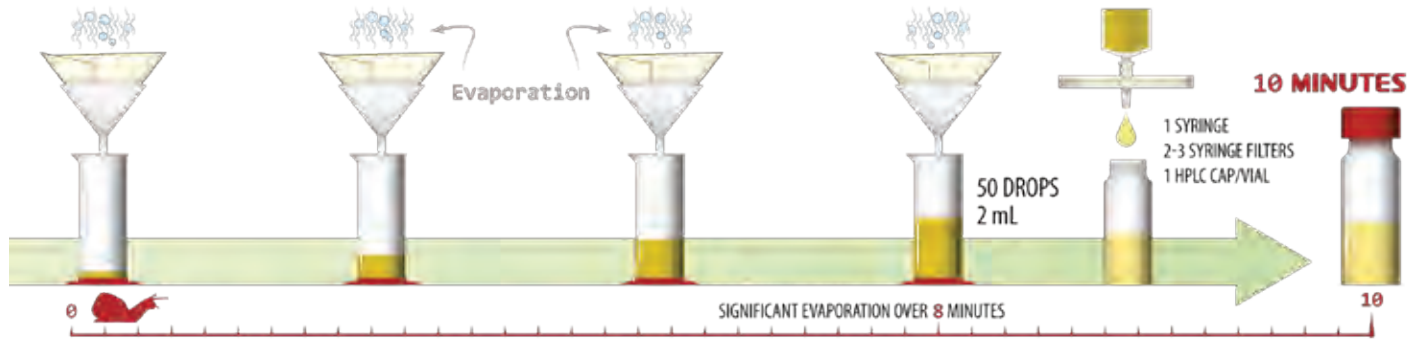
New Method = eXtreme|FV® with Multi-Layered Filtration Technology



New Method (Filter Vials)

	0-10 Hour	11+ Hour
Filter Vial	1	1
HPLC Vial	0	0
HPLC Cap	0	0
Labor (time)	2 minutes	2 minutes
Gravity Filtration Time (evaporation of sample)	1 minute	1 minute

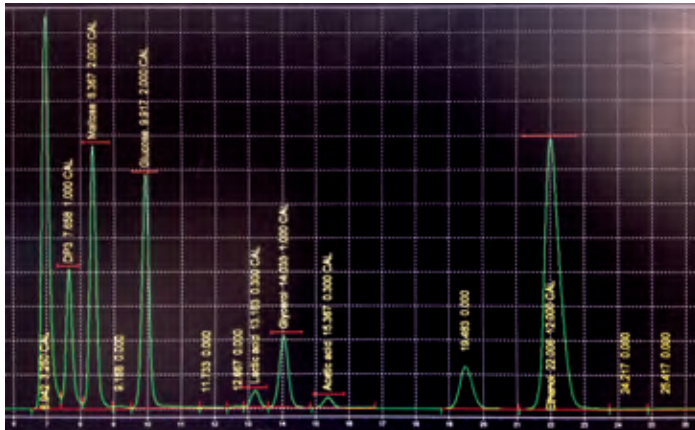
Old Method = Labor Waste, Sample Evaporation & Unwanted Consumables



Old Method (syringe filters)

	0-10 Hour	11+ Hour
Syringe Filter	up to 3	1
HPLC Vial	1	1
HPLC Cap	1	1
Labor (time)	10 minutes	10 minutes
Gravity Filtration Time (evaporation of sample)	8+ minute	8 minute

Chromatogram



“...I have seen much less down time with my machine since switching to your extreme filter vials. I am very impressed with the results and will not be switching back to syringe filters.”

-Ethanol plant lab manager