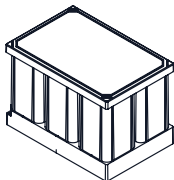
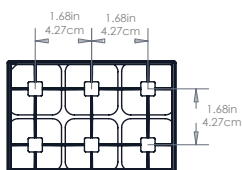
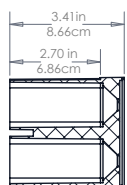
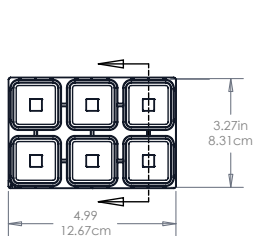
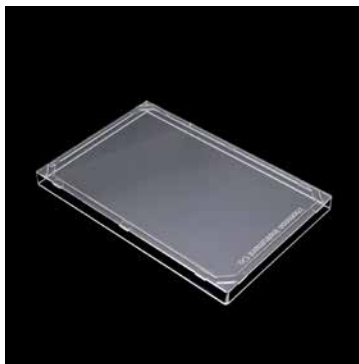


Optimum Growth® 6-Well Plate with Acrylic Lid Technical Data Sheet

Product Description	Part #	Sterility
Optimum Growth® 6-Well Plate with Acrylic Lid	931167	10 ⁻⁶

OptimumGrowth®



Introduction

The Thomson Optimum Growth® 6-Well Platform represents a significant advancement over conventional 50 mL spin tube systems by addressing critical bioprocess limitations. Our engineered solution accommodates larger working volumes while maintaining precise environmental control through optimized gas exchange and enhanced mixing dynamics. The platform's integrated design ensures stable, contamination-free conditions essential for high-quality bioprocessing applications. By eliminating the handling constraints associated with traditional spin tubes, the system streamlines operational workflows while delivering the consistent, reproducible results demanded by contemporary advanced bioprocessing protocols.

Specifications

Well Count	6
Well Vol.	82mL
Well Shape	Square Well / Pyramid Bottom
ANSI-SLAS	No
Seal Compatibility	899410, 899405-1, 899403, 899406
Plate Material	Polypropylene
Lid	Polypropylene
Sterility (SAL)	10 ⁻⁶

6-Well Plate Lid Guidance Table:

Lid Type	Preferred Top	Fill Volume	Shake Speed	Culture Duration
Acrylic lid (included with P/N 931167)	Least Recommended	20-30mL	180-200RPM	4-7 (Days)
6-Well Integrated Lid (P/N 981648)	Highly recommended	20-30mL 20-50mL	200-225RPM 200-225RPM	4-7 (Days) 7-10 (Days)
Airporous Plate Seal (P/N 899410)	Recommended	20-30mL	180-200RPM	1-3 (Days)

Note: This is applicable for cell types: CHO, HEK, & Insect

FAQ's

Can I spin my 6-Well Plate in a standard centrifuge?

The overall plate height with lid installed (either Integrated Lid or Acrylic Lid) is 3.49 in / 8.86 cm, compatible with most swinging bucket rotors designed for deep well plates. The plate assembly can withstand centrifugation up to 2000g. For detailed dimensional specifications or if technical drawings are required, please contact www.technicalsupport.com or your local Sales Representative.

How many plates can I put in a standard shaker at one time?

The 6-Well Plate demonstrates universal compatibility with INFORS™ Peg Tray Adaptor and Kuhner™ spring trays. The Infors™ Peg Tray Adapter (Part# 12653.2.2 for 4 plates; Part# 12654.2.2 for 6 plates) securely accommodates 6-Well Plates on standard INFORS™ Multitron platforms. The Kuhner™ Spring Tray F System (Part# 104825) utilizes a spring-loaded mechanism that securely holds 24 6-Well Plates per tray.

Are the 6-Well Plates and lids single-use?

Yes, the Optimum Growth® 6-Well Plates and lids are designed for single-use and are not autoclavable.

Why do 6-Well plates perform better than standard bioreactor tubes?

6-Well Plates are readily adaptable to automated systems as well as manual benchtop operations. Utilizing the 6-Well Plate format significantly reduces contamination risks by minimizing the number of individual vessels requiring handling during experimental procedures.

Why do 6-Well plates perform better than other disposable plates?

The 6-Well Plate represents the only mid-scale format that integrates with its dedicated Integrated Lid system. This eliminates the need for bulky clamping mechanisms to secure the plate or maintain lid placement during operation.

Thomson Instrument Company is not affiliated with INFORS™ and Kuhner™