

series	cap color	membrane	pore size	part #
eXtreme FV®	●	PVDF	0.2µm	85531

Improved Sample Preparation Methods for Athlete Doping Analysis of Common Compounds in Urine by LCMS

Dr. Catrin Goebel², Lisa Wanders¹, Sam Ellis¹

¹Thomson Instrument Company

²Australian Sports Drug Testing Laboratory in the National Measurement Institute Department of Industry

Abstract

Anti-doping testing by urine analysis requires fast and robust screening methods with repeatable sample preparation. Since, every sample has to be screened, methods are designed to be sufficiently sensitive and specific to identify all suspect samples. One must be careful to minimize false suspects. Ensuring samples are spiked with internal standards accordingly will help verify that samples are being extracted and tested correctly and with accurate uniformity.

The Australian Sports Drug Testing Laboratory, our collaborators, have invested time in determining a limited number of comprehensive screening methods. These methods, using Thomson's eXtreme Filter Vials (patented), comply with the World Anti-Doping Agency's (WADA) Prohibited List.

In exploring new methods labs have looked at both detection and sample prep as routes to quicker and more accurate analysis. Liquid chromatography coupled with mass spectrometry detection is prevalent, superseding many of the gas chromatographic coupled with mass spectrometry methods because of the simpler sample preparation. Specifically, the anti-doping testing shown below consisted of sample preparation without the initial use of cumbersome traditional SPE methods, and instead consisted of the comparison of filtration techniques. Filter plates versus Thomson eXtreme Filter Vials (patented) were tested to determine which product allowed for a method of simple and quick urine analysis while complying with the WADA's guidelines.

Experiment

The experiments were performed at the National Measurement Institute (Australia) in the Sports Drug Testing Laboratory.

The 11.8 minute run time for the instrumental analysis meets the requirements of the WADA Technical Document- Minimum Required Performance Level (TD2013MRPL). This document details the analysis of a large number of analytes from the classes on the WADA Prohibited List, while meeting sensitivity requirements. The analytes included compounds in the following classes anabolic agents, B2-agonists, hormone antagonists and modulators, diuretics, stimulants, narcotics, glucocorticoids, B-blockers, etc.

Full Method

A comparison between sample preparation using filter plates sourced from several different manufactures, and Thomson eXtreme Filter Vials (patented) PVDF 0.2µm (85531-500) was conducted. The preparation with the Thomson eXtreme Filter Vials were automated using a Tecan robotics platform for liquid dispensing in the Thomson 48 position rack (#35010-RACK), and 48 position press (#35015).

Direct Urine Preparation

1. Label each eXtreme Filter Vial with sample/quality control sample information.
2. Pipette 200 µL of each sample into labeled eXtreme Filter Vial.
3. Add 200 µL of the Mefruside Internal Standard (300 ng/mL in 0.5% formic acid) to each filter vial cup.
4. Place the eXtreme Filter Vial tops onto each vial and press shut.

LCHRMS System

UPLC coupled to High Resolution Mass Spectrometry with an electrospray source in full scan mode. Data acquisition in both positive and negative polarity modes within a single 11.8 min chromatographic run.

- Column: C18, 2.1mm × 50mm, 1.7µm
- Column Temperature: 30 °C
- Flow rate: 300µL/min
- Mobile Phase:

- A: 0.3% aqueous Formic Acid in Water
- B: 0.3% Formic Acid in Acetonitrile
- Gradient:

Time	A%	B%
0.00	95	5
0.50	95	5
3.50	80	20
5.50	75	25
7.00	43	57
8.00	10	90
8.60	10	90
8.80	95	5

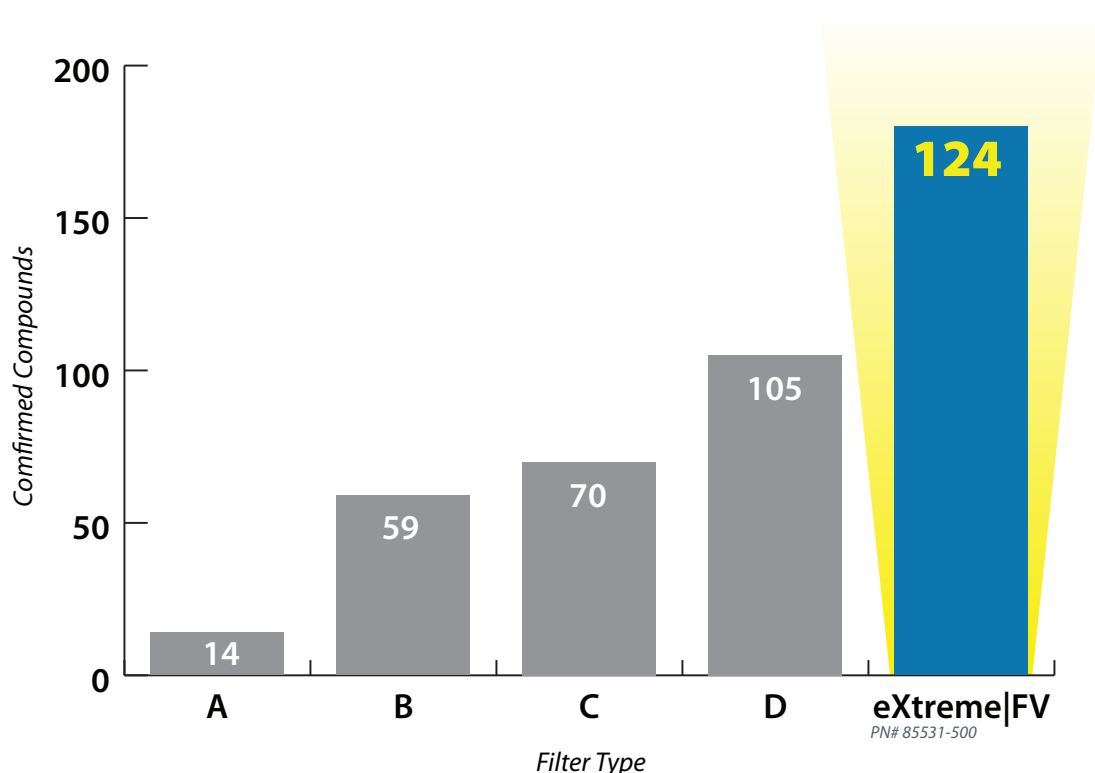
- Injection volume: 10µL
- Sample tray temperature: 18°C
- Column Temperature: 30°C
- Method run time: 11.8 minutes
- Gas: UHP Nitrogen

Conclusions

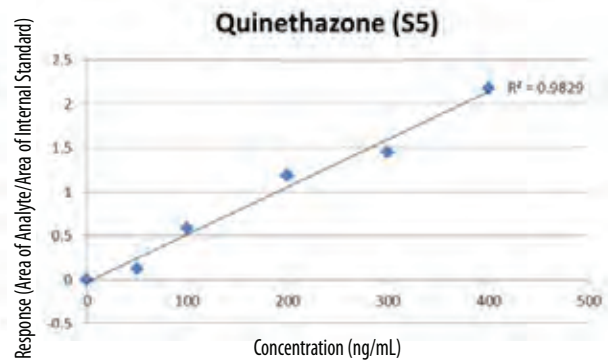
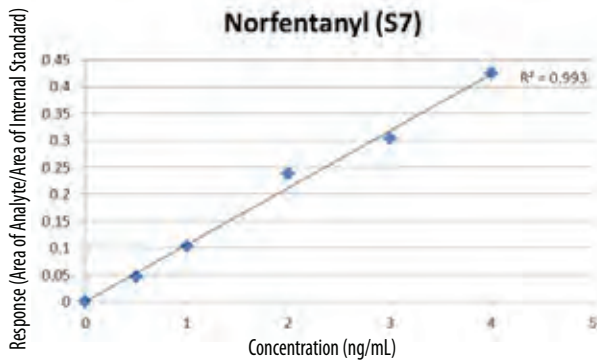
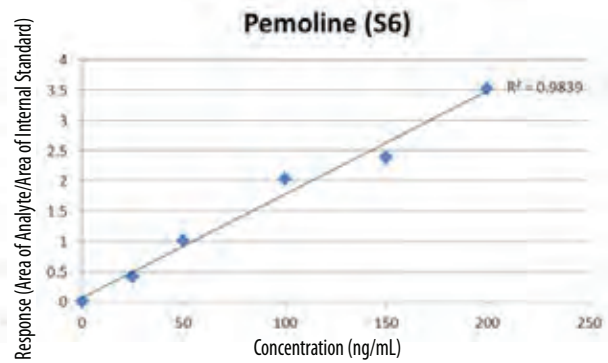
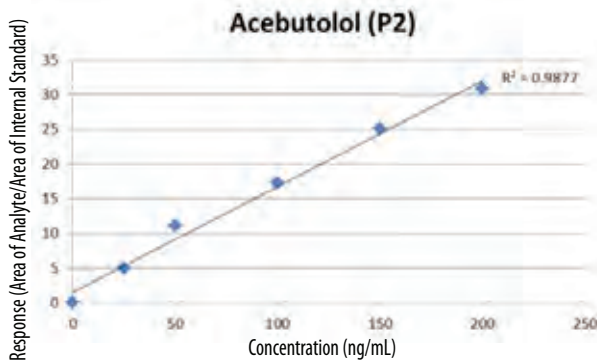
The Thomson eXtreme Filter Vials (patented) PVDF 0.2 µm (85531-500) performed the best in compound extraction and identification while allowing the end user to follow the WADA validated method. The elimination of SPE steps from laboratory methods is a large time saver, and enables urine-direct-injection solely using Thomson eXtreme Filter Vials for filtration. Together the Thomson 48 position Filter Vial Press and automation enabled 48 position rack equaled timing of filter plate methodology but provided the best extraction and identification of all filter types. A total of 180 compounds can be identified through the screening analysis with the Thomson eXtreme Filter Vials (patented) PVDF 0.2µm (85531-500).

The method presented is being used for the analysis of athlete’s urine samples for banned substances at the Australian Sports Drug Testing Laboratory.

Comparison of Filter Types



Linearity of The Analysis Method Was Assessed Over a Range From 25% To 200% Of MRPL With R2 Generally Being Greater Than 0.98



124 Confirmed Compounds

5-Hydroxyindapamide
Bisdesmethylsibutramine
Desmethylsibutramine
Exemestane
Mefruside (+)
Mefruside (-)
D3-epitestosterone glucuronide
D3-epitestosterone
AICAR
GW1516
Atenolol
Bisoprolol
Esmolol
Metipranolol
Nadolol
Nadoxolol
Oxprenolol
Clenbuterol
Gestrinone
Methyldienolone
Methyltrienolone
Metribolone
Tetrahydrogestrinone
Tibolone
Zilpaterol
3'-Hydroxystanozolol
4'-Hydroxystanozolol
Bambuterol

Formoterol
Salbutamol
Salmeterol
Terbutaline
Andarine
Exemestane metabolite
Aminoglutethimide
Raloxifene
Fulvestrant
GW1516 (501516)
Methazolamide
Piretanide
Quinethazone
Spironolactone
Trichlormethiazide
Acetazolamide
Althiazide
Amiloride
Bendroflumethiazide
Benzthiazide
Bumetanide
Canrenone
Chlorexolone
Chlorothiazide
Chlorthalidone
Clopamide
Probenecid
Cyclopenthiiazide
Cyclothiazide
Dichlorphenamide

Epitizide	Hydroxy mesocarb
Eplenerone	Isometheptene
Etacrynic acid (frag?)	MDA
Furosemide	MDMA
Hydrochlorothiazide	Methylphenidate
Mefruside metabolite 2	Modafinil
Indapamide	Modafinil Acid (metabolite)
Metolazone	Nikethamide
Polythiazide	Oxilofrine
Toraseamide	Pemoline
Triamterene	Pentetrazol
Xipamide	Phenmetrazine
Caffeine	Pholedrine
Cis-4-Methylaminorex	p-Hydroxy amphetamine
Cotinine (Nicotine metab)	Ritalinic Acid
MBDB	nor-Selegiline
Methoxyamphetamine	Methylecgonine
Methylenedioxyethylamphetamine	Codeine
Adrafinil	Hydromorphone
Amiphenazole	Morphine
Amphetamine	JWH018 N-(5-hydroxypentyl) metabolite
Benzoylcgonine	JWH073 N-butanoic acid metabolite
Benzylpiperazine	Budesonide
Carphedon	Cortisol
Cathine	Cortisone
Crotethamide	Flumethasone
Cyclazodone	Fluticasone propionate metabolite
Ephedrine	Methylprednisolone
Phenylpropanolamine	16a-OH-Prednisolone
Pseudoephherine	Prednisolone
Etamivan	Sildenafil
Etilefrine	Tadalafil
Fenetylline	Vardenafil

Solvent Usage & Disposal, Time (Labor) & Equipment Cost for 96 Samples

	SPE	SLE	Filter Vial
Vol. Solvent used	1632 mL	76.8 mL	<1 mL
Time to complete	150 min. + 20 min. dry down/ reconstitute	35 min.	4 min.
Equipment Cost	~\$150,000.00	~\$11,400.00	\$500.00
Maintenance/ Annually	\$15,000.00	~\$100.00	\$0.00

Acknowledgments

We would like to thank Dr. Catrin Goebel, Director, of Australian Sports Drug Testing Laboratory in the National Measurement Institute, Department of Industry (a WADA accredited laboratory in Australia) for her extensive testing. Dr. Goebel is also an Executive member of World Association of Anti-Doping Scientist.

Thomson Instrument Company is not affiliated with Australian Sports Drug Testing Laboratory or World Anti-Doping Agency. World Anti-Doping Agency and Australian Sports Drug Testing Laboratory is not affiliated, nor endorses Thomson's products.